

1

2

3

4

A

A

B

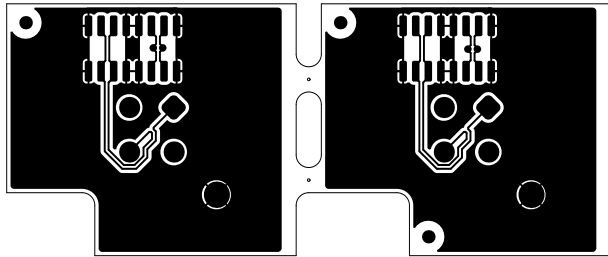
B

C

C

D

D



Kronotech Srl Via Adriatica 284 33030 – Campoformido (UD) Italy		
TITLE: TITLE Top Layer		
SIZE: A4	DWG NO: TITLE	REV: 0
SCALE: 1:1	DO NOT SCALE DRAWING	DATE: 07/01/2025

1

2

3

4

1

2

3

4

A

A

B

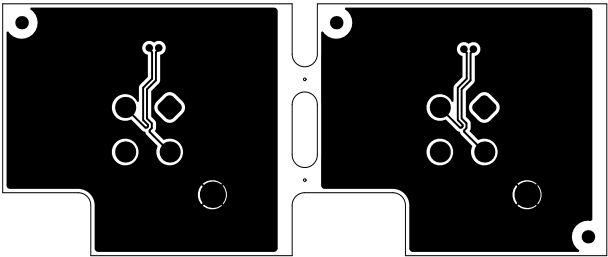
B

C

C

D

D



Kronotech Srl Via Adriatica 284 33030 – Campoformido (UD) Italy		
TITLE: Bottom Layer TITLE		
SIZE: A4	DWG NO: TITLE	REV: 0
SCALE: 1:1	DO NOT SCALE DRAWING	DATE: 07/01/2025

1

2

3

4

1

2

3

4

A

A

B

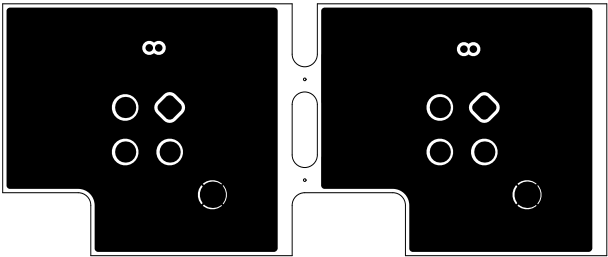
B

C

C

D

D



Kronotech Srl Via Adriatica 284 33030 – Campoformido (UD) Italy		
TITLE: Mid-Layer 1 TITLE		
SIZE: A4	DWG NO: TITLE	REV: 0
SCALE: 1:1	DO NOT SCALE DRAWING	DATE: 07/01/2025

1

2

3

4

1

2

3

4

A

A

B

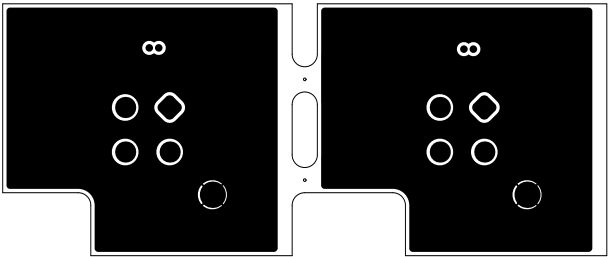
B

C

C

D

D



Kronotech Srl Via Adriatica 284 33030 – Campoformido (UD) Italy		
TITLE: Mid-Layer 2 TITLE		
SIZE: A4	DWG NO: TITLE	REV: 0
SCALE: 1:1	DO NOT SCALE DRAWING	DATE: 07/01/2025

1

2

3

4

1

2

3

4

A

A

B

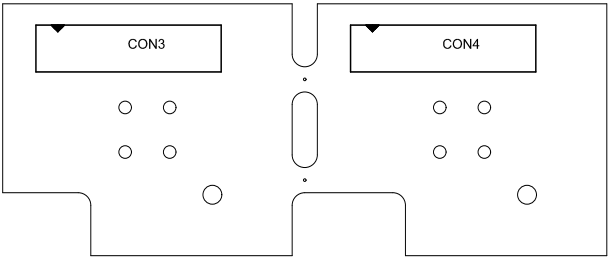
B

C

C

D

D



Kronotech Srl Via Adriatica 284 33030 – Campoformido (UD) Italy		
TITLE: TITLE Top Assembly		
SIZE: A4	DWG NO: TITLE	REV: 0
SCALE: 1:1	DO NOT SCALE DRAWING	DATE: 07/01/2025

1

2

3

4

1

2

3

4

A

A

B

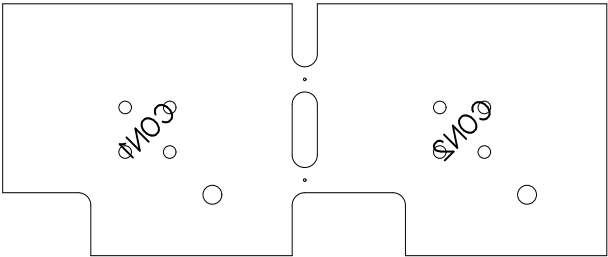
B

C

C

D

D



Kronotech Srl Via Adriatica 284 33030 – Campoformido (UD) Italy		
TITLE: Bottom Assembly TITLE		
SIZE: A4	DWG NO: TITLE	REV: 0
SCALE: 1:1	DO NOT SCALE DRAWING	DATE: 07/01/2025

1

2

3

4

1

2

3

4

A

A

B

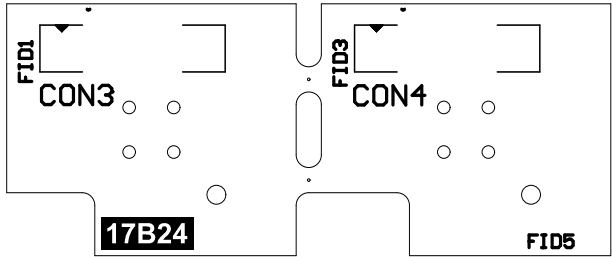
B

C

C

D

D



Kronotech Srl Via Adriatica 284 33030 – Campoformido (UD) Italy		
TITLE: TITLE		
SIZE: A4	DWG NO: TITLE	REV: 0
SCALE: 1:1	DO NOT SCALE DRAWING	DATE: 07/01/2025

1

2

3

4

1

2

3

4

A

A

B

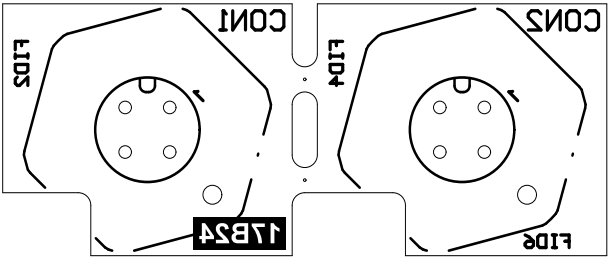
B

C

C

D

D



Kronotech Srl Via Adriatica 284 33030 – Campoformido (UD) Italy		
TITLE: TITLE		
SIZE: A4	DWG NO: TITLE	REV: 0
SCALE: 1:1	DO NOT SCALE DRAWING	DATE: 07/01/2025

1

2

3

4

1

2

3

4

A

A

B

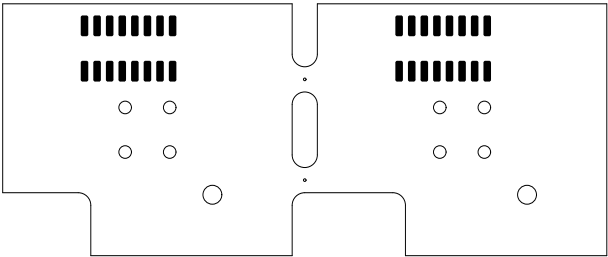
B

C

C

D

D



Kronotech Srl Via Adriatica 284 33030 – Campoformido (UD) Italy		
TITLE: TITLE Top Paste		
SIZE: A4	DWG NO: TITLE	REV: 0
SCALE: 1:1	DO NOT SCALE DRAWING	DATE: 07/01/2025

1

2

3

4

1

2

3

4

A

A

B

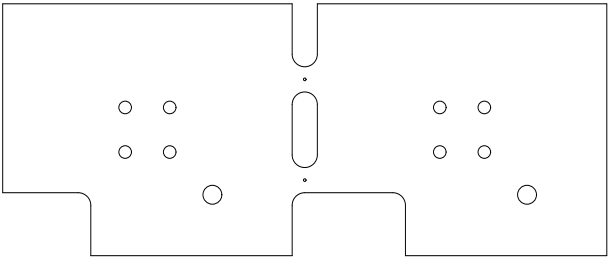
B

C

C

D

D



Kronotech Srl Via Adriatica 284 33030 – Campoformido (UD) Italy		
TITLE: Bottom Paste		
SIZE: A4	DWG NO: TITLE	REV: 0
SCALE: 1:1	DO NOT SCALE DRAWING	DATE: 07/01/2025

1

2

3

4

1

2

3

4

A

A

B

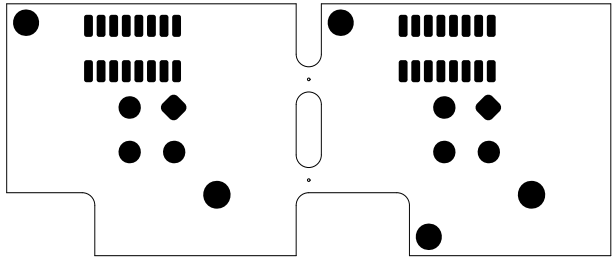
B

C

C

D

D



Kronotech Srl Via Adriatica 284 33030 – Campoformido (UD) Italy		
TITLE: TITLE Top Solder		
SIZE: A4	DWG NO: TITLE	REV: 0
SCALE: 1:1	DO NOT SCALE DRAWING	DATE: 07/01/2025

1

2

3

4

1

2

3

4

A

A

B

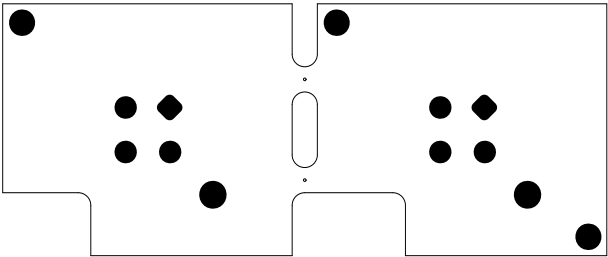
B

C

C

D

D



Kronotech Srl Via Adriatica 284 33030 – Campoformido (UD) Italy		
TITLE: Bottom Solder TITLE		
SIZE: A4	DWG NO: TITLE	REV: 0
SCALE: 1:1	DO NOT SCALE DRAWING	DATE: 07/01/2025

1

2

3

4

1

2

3

4

A

A

B

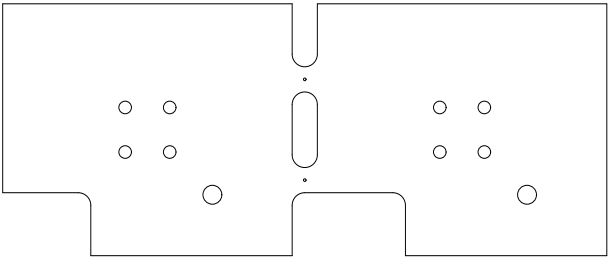
B

C

C

D

D



Kronotech Srl Via Adriatica 284 33030 – Campoformido (UD) Italy		
TITLE: Board Outline TITLE		
SIZE: A4	DWG NO: TITLE	REV: 0
SCALE: 1:1	DO NOT SCALE DRAWING	DATE: 07/01/2025

1

2

3

4

1

2

3

4

A

A

B

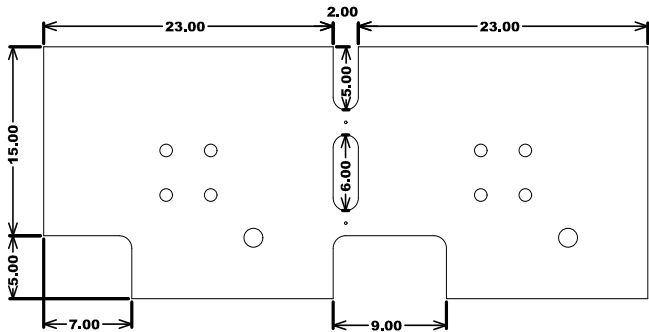
B

C

C

D

D



Kronotech Srl
Via Adriatica 284
33030 – Campoformido (UD) Italy

TITLE:
TITLE **Dimensions**

SIZE:

A4

DWG NO:

TITLE

REV:

0

SCALE:

1:1

DO NOT SCALE DRAWING

DATE:

07/01/2025

1

2

3

4

1

2

3

4

A

A

B

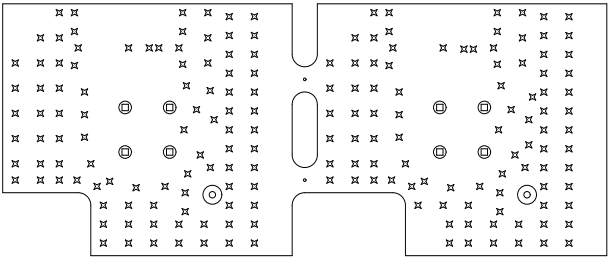
B

C

C

D

D



Symbol	Count	Hole Size	Plated	Hole Type	Drill Layer Pair	Via/Pad	Pad Shape
○	2	1.20mm (47.24mil)	PTH	Round	Top Layer - Bottom Layer	Pad	Rounded
□	8	1.00mm (39.37mil)	PTH	Round	Top Layer - Bottom Layer	Pad	(Mixed)
✱	185	0.30mm (11.81mil)	PTH	Round	Top Layer - Bottom Layer	Via	Rounded
	195 Total						

Kronotech Srl Via Adriatica 284 33030 – Campoformido (UD) Italy		
TITLE: TITLE Drill Drawing		
SIZE: A4	DWG NO: TITLE	REV: 0
SCALE: 1:1	DO NOT SCALE DRAWING	DATE: 07/01/2025

1

2

3

4

A

B

C

D

A

B

C

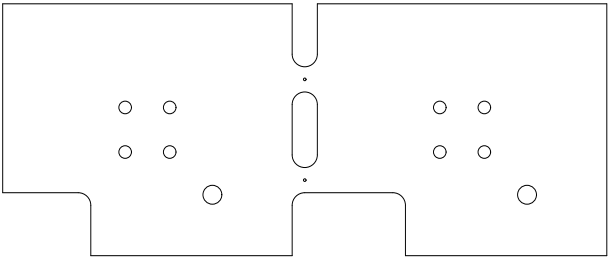
D

Gerber files:

Layer Extension	Layer Description
.GTO	Top Overlay
.GTP	Top Paste
.GTS	Top Solder
.GTL	Top Layer
.G1	Mid-Layer 1
.G2	Mid-Layer 2
.GBL	Bottom Layer
.GBS	Bottom Solder
.GBP	Bottom Paste
.GBO	Bottom Overlay
.GMI	Board
.GMS	Top Assembly
.GMB	Bottom Assembly
.GDI	Drill Drawing

Drill files:

*.TXT = NC Drill Report



- Board Info
- Minimum Track: 150um
- Minimum Gap: 150um
1. FINISHED PANEL THICKNESS TO BE 1.60mm

2. BOARD MATERIAL: ITEQ IT-158

3. BOARD FINISH: HAL Lead Free

4. SOLDER RESIST: APPLY TO BOTH SIDES COLOUR - Blue

5. COMPONENT IDENT: COLOUR TO BE WHITE

6. TOLERANCES: BOARD THICKNESS: +/- 10%

Layer	Name	Material	Thickness	Constant	Board Layer Stack
	Top Overlay				
	Top Solder	SM-003	0.025mm	4	
1	Top Layer	CF-004	0.035mm		
	Dielectric 1	PP-016	0.117mm	4.4	
	Dielectric 2	PP-016	0.117mm	4.4	
2	Mid-Layer 1	CF-004	0.035mm		
	Dielectric3	Core-042	0.991mm	4.6	
3	Mid-Layer 2	CF-004	0.035mm		
	Dielectric 4	PP-016	0.117mm	4.4	
	Dielectric 5	PP-016	0.117mm	4.4	
4	Bottom Layer	CF-004	0.035mm		
	Bottom Solder	SM-003	0.025mm	4	
	Bottom Overlay				

Kronotech Srl

Via Adriatica 284

33030 – Campofornido (UD) Italy

TITLE:

TITLE

Fab Notes

SIZE:

A4

DWG NO:

TITLE

REV:

0

SCALE:

1:1

DO NOT SCALE DRAWING

DATE:

07/01/2025